

### Mobile Home White Elastomeric

Water-based, specifically formulated with 100% acrylic resin for mobile homes. 5-year guarantee. Remains flexible from -10° to 160° F. No mixing, soap and water cleanup when wet. No hazardous chemicals or solvents. UL approved, Class A fire rating. VOC=less than 60 grams/liter.



**110342** 5 Gallon

### Blue Label Aluminum

ULTRA-HIGH PERFORMANCE FOR METAL, ASPHALT, MODIFIED BITUMEN & ROLLED ROOFING

Protects against moisture with a unique asphalt and aluminum formula. Reduces heat build-up to keep interiors cooler with energy savings of up to 30%. Covers approx. 80-100 sq. ft. 5-year warranty.



**110102** 1 Gallon; 4/Ctn.

**110105** 5 Gallon

### White Elastomeric

ULTRA-HIGH REFLECTIVITY FOR METAL, CONCRETE, BONDED TAR AND GRAVEL, FOAM, BRICK, WOOD, FLAT AND BARREL CE-  
MENT TILE ROOFS.

100% acrylic elastomeric resin to keep interiors cooler with energy savings of up to 35%. Covers approx. 75-100 sq. ft. per gallon.



**110331** 1 Gallon; 4/Ctn.

**110332** 5 Gallon

### Aluminum Economy

FOR METAL, ASPHALT, MODIFIED BITUMEN & ROLLED ROOFING

Asphalt based aluminum protects against moisture and damaging UV rays for energy savings of up to 20%. Covers approx. 50 sq. ft. per gallon.



**110108** 1 Gallon; 4/Ctn.

**110110** 5 Gallon

*Not Stocked At All Locations*

### Jisco Mixer

Mixes thick paints, pastes, joint cements, asphalt driveway sealers and roof coatings with fiber evenly in 1, 2 or 5 gallon cans. Baffle plate forces material down. Fits any 3/8" electric drill; 5.16" shaft 24" long for 5 gallon cans with 11.5" of mixing action. Scrapes sides of can completely. No sharp edges. Comes complete with operating instructions. 6/Ctn.

**381005**



### Roofing Brush & Handle



**110601** 7" Brush; 48/Ctn.

**110600** 48" x 7/8" Handle; 50/Ctn.

## Anvil Premium Fibered Elastomeric White Roof Coating

May be applied over new galvanized surfaces. Dries in 30-60 minutes. Second coat can be applied in 1-2 hours. Will not chalk, peel or drip. Coverage: approx. 150 sq. ft. per gallon for two coat coverage.



- 110218 Quart; 9/Ctn.
- 110216 2 Gallon
- 110217 1 Gallon; 4/Ctn.
- 110215 5 Gallon



## Anvil Elastomeric White Roof Coating

Superior performance and brilliant white good looks, superior to the usual home center products on the market, for when you need a competitively priced all-round elastomeric alternative.

110225 5 Gallon

## Elixir Economy Roof Coating



Brush and trowel grade aluminum pigmented asphalt roof coating. Reinforced with fiber for strength; fills in irregular surfaces and flashing materials. Asphalt and metal roofs. Coverage: approx. 50-100 sq. ft. per gallon.

110112 5 Gallon

## Kool-Patch White Patching Cement

Stops roof leaks when used with KoolSeal polyester fabric. Ideal for patching cracks, holes, etc.



- 110313 Quart
- 110341 Gallon; 4/Ctn.

## Kool-Patch Black Patching Cement

Brush on for a tough, flexible patch ideal for cracks, holes and breaks around chimneys, flashings, A/C or stress areas. Won't shrink or sag.



110222 Gallon; 4/Ctn.

## Kool-Flexx Blue Reinforcing Grid



Strong, flexible grid covers cracks 1/4" or more, seams and stress areas on existing roofing materials. Will not rot or corrode. Use with roof coating. POP displays are available.

110410 4" x 40'

## Cool King Economy Roof Coating

Primarily for mobile homes and RVs for weather resistance and sound dampening of an asphaltic compound plus the heat reflection and ultraviolet protection of an aluminum coating. Coverage: metal surfaces approx. 70-100 sq. ft. per gallon; composite surfaces approx. 40-60 sq. ft. per gallon.



- 110650 5 Gallon
- 110653 1 Gallon

## Cool King Aluminum Roof Coating

Waterproofing asphaltum and high grade aluminum pigments plus non-asbestos fibers reflect up to 80% of the sun's rays. Prevents drying and cracking which cause leaks. Coverage: metal surfaces approx. 70-100 sq. ft. per gallon; composite surfaces approx. 40-60 sq. ft. per gallon.



110652 5 Gallon

# LEAK STOPPER

RUBBERIZED  
ROOF PATCH

- Stops roof leaks instantly
- Specially designed for problem leaks
- Permanent Repair
- Use in wet or dry conditions
- Rubberized to prevent cracking
- Lasts 2 - 3x longer than standard patches

**NEW!**

**10**  
YEAR  
WARRANTY



Specially formulated to penetrate deep into damaged areas. The secret is Penetrex™, a unique penetrating oil that forms a complete seal. With liquid rubber, this flexible, high performance plastic cement provides a superior watertight bond that stops problem leaks for good. Apply with a trowel or putty knife. Covers approx. 12 sq. ft. per gallon when applied 1/8" thick.

**110420** 11 Oz. Tube

## Peel & Seal



Self-stick roof covering reduces roof temperature as much as 22.5% and resists UV radiation. Durable, multi-layers resist abrasion, self-seals around most punctures, needs no additional coating. Stretches to allow for building movement, won't crack or dry out, impervious to fungus, algae or bacteria. Rolls are 33.5" long.

- 110350** Aluminum 6"; 6/Ctn.
- 110351** White 6"; 6 Ctn.
- 110352** Aluminum 36"; 1/Ctn.
- 110353** White 36"; 1/Ctn.
- 110354** Aluminum 18"; 1/Ctn.
- 110355** Aluminum 12"; 1/Ctn.

## Storm Patch Flexx Sealer

**NEW!**

*Fast, easy, permanent, flexible patch*

Permanent, multi-purpose roof repair seals cracked or rusted flashings, vent pipes, rain gutters and downspouts. Stops leaks between shingles, roof seams and laps, soffits, parapet walls and around chimneys and skylights. Use on shingles, metal, asphalt, tar, fiber, glass, concrete, wood, plastics and rubber. One-step installation, cuts with scissors and clean to use -- no mess, no waste. Easily shaped and molded to any surface. Adheres to all porous and non-porous surfaces, except siliconized materials. Bonds immediately, seals instantly, no curing time. Remains flexible, never hardens, cracks, peels or shrinks. Stops leaks, rust and corrosion. Resists mold and mildew. Effective between -76° and 180° F. Non-toxic, environmentally friendly. Limited lifetime guarantee. Clam pack.

- 110412** 2" x 3'
- 110413** 2" x 10'



## Anvil Caulk-Sealant

Dries flexible and contains superior bonding agent (silicone). Can be used on wood, concrete, baked enamel, glass and more. White.

**110311** Gallon; 4/Ctn.



## Anvil Patcher/Sealer

Textured, ideal for sealing seams on roofs and awning rails. Adheres to any surface, such as galvanized roofing, without preparation.

**110220** Gallon



## Vinyl Floor Repair Kit



Patented process repairs burns, tears, gouges, holes, cuts and dents in vinyl and linoleum floors in just 15 minutes using a simple process without any seams. In just three easy steps, kit repairs up to three quarter-sized holes, eliminating unsightly damage.

110239

## Bath/Tub Repair Kit



Comes with everything for the most demanding repairs to all types of plastics, fiberglass and even enamel bath fixtures. Shower stall cracks can be repaired in minutes. For both white and almond.

110235

## #6 Mastic Air Duct Sealant



Low to high velocity, non-toxic adhesive-sealant for permanently sealing the fabricated joints and seams of sheet metal air ducts, UL-181 listed rigid fiberglass air ducts, UL-181 listed flexible air ducts and

thermal insulation. Also ideal for repairing damaged and leaking air ducts and sealing conditioned spaces from air infiltration. Waterbased, non-flammable, high solids content, fiber reinforced, excellent longevity (actually strengthens with age), fire/mold/mildew resistant, weatherproof, elastomeric. Easy to apply and clean up.

110500 2 Gallons



Geocel®

**Pro Flex®**  
**Tripolymer**  
**Caulking**  
**Sealant**

**NEW!**

Single component, high performance elastomeric sealant. Super flexible, excellent adhesion even when damp, UV resistance, mildew resistant, resealable, may be applied over itself, asphalt compatible, paintable, no dirt pickup; easy to apply, non-stringing formula. 10 fl. oz.

110383 Crystal Clear

# Surewall Surface Bonding Cement



Patented, hydraulic cement-based, fiber-reinforced for use in building dry stack block walls without mortar joints. Fast, easy way to build walls that can stand up to 98 mph wind-driven rain. Exceeds ASTM C887 packaged materials for surface bonding mortar. Gray, 50# bag.

110270

# All-Direction Insulating Foam



All-direction dispenser lets you apply foam from any direction or angle, even upside-down or sideways.

112010

Prices and Specifications Subject to Change without Notice

# InsulSafe4 Blowing Insulation

**NEW!**



- Thermally efficient
- Noncombustible
- Noncorrosive
- Acoustically efficient
- Odor free
- Rot and decay free
- Fiberglass, so will not give sustenance to insects or vermin
- Meets all federal and local standards
- Tested and proven

The world's premier insulation provides outstanding thermal performance for safety and energy savings. 27 lb. bag.

270400



## DAP Kwik Seal Tub & Tile Caulk

Bonds like a glue and seals like a caulk. Provides a durable, watertight seal, excellent adhesion and flexibility. Tools easily, paintable, water clean-up.

- 119000** Almond 6 oz.
- 119001** White 10.1 oz.
- 119002** White 5.5 oz.



## Geocel Painters Acrylic Latex Caulk

Single component, non-sag, 25-years life expectancy, guns easily. Flexible with excellent adhesion to common building materials. Minimal shrinkage. Tack free in 30 minutes. UV stable. Soap and water clean-up. 10 fl. oz.

**110382**

## Liquid Nails



Premium rubber-based adhesive bonds with virtually all materials, including wood, steel, plaster and concrete. Waterproof. Sheer strength exceeding 400 psi — twice the strength of most other adhesives in a similar class. 10.5 oz.

- 110255** For Interior Projects
- 110257** For Subfloors (Exterior)
- 110258** For Tubs and Surrounds
- 110259** For Tubs and Surrounds  
VOC Compliant



## Acryl-R Narrow Joint Sealant

One-component solvent release sealant to seal mechanically fixed joints such as corner joints, flashing joints, screw heads and hidden wall system joints. Excellent adhesion and weatherability. Apply with standard caulking gun. 11 oz.

**112410** Aluminum



## Boss 378 Silicone Sealant

100% silicone caulk provides weatherproof and waterproof seal. Remains flexible and lasts for years under extreme temperature changes, moisture, weathering, vibration, expansion and contraction. Bonds to metal, glass, porcelain, ceramics, wood, fiberglass, many plastics and concrete. 10.3 oz.

- 112004** Clear
- 112005** White
- 112006** Black
- 112008** Almond



## DAP Dynaflex 230 Elastomeric Latex Sealant

Superior flexibility, durability, easy tooling, paintability and low odor. Excellent adhesion and watertight, weatherproof seal; mildew resistant when cured. Water clean-up, 50-year durability guarantee. 10.1 oz.

- 110336** White
- 110337** Clear





## Instant Roof Leak Repair



Single component, brushable, elastic sealant with rubber-like flexibility, a permanent solution for roof leaks. Stops leaks immediately, even in wet and icy conditions. Adheres to asphaltic and metal surfaces, sprayed polyurethane foam as well as EPDM, Hypalon, Neoprene, TPO, PVC and other prefab sheets. Fibered for strength. Functions in severe UV, heat, acid rain and foot traffic. One-step application: wipe, brush or leave alone. Mildew proof and paintable. Quart.

**110384** White

**110385** Clear

## Black Jack Roof Cement



Asphalt sealer-filler patches cracks in roofing, firewalls, chimneys, gutters, flashing, etc. particularly for emergency repairs of wet surfaces. Apply with standard caulking gun. Cleanup with paint thinner or mineral spirits. Flexible. Cannot be painted.

**110425** 10 oz.; 12/Ctn.



## Parbond

Weather-resistant sealant for small joints or gaps up to 1/8" between metal, glass, masonry and wood or as a surface coating over fine cracks. Will not bleed or discolor. Fast skinning and curing.

**110309** Clear Gallon; 6/Ctn.

**110302** Clear 5 oz. Tube; 24/Ctn.

## Dyco C-10 Hypalon Flow Seal Caulk



Self-leveling, paintable, fast drying, weather resistant, will not surface harden or crack. Resists mold and mildew, fungus and bacteria. When cured, resists water, oil, grease, gasoline, salt and many other chemicals. Forms a tough, flexible synthetic rubber seal, dries in 30 to 60 minutes. Second coats can be applied after 30-60 minutes. Semi-gloss sheen. Recommended for horizontal surfaces such as roofs on RVs, mobile homes, metal buildings, roofovers, vents, seams, inside gutters, etc. Easy cleanup with xylene solvent. 11 oz. tube.

**110450** Gray

**110451** White



## Caulking Gun

Use with 11 or 12 ounce cartridges. Spring grip maintains steady pressure and even bead.

**112401**

## Caulk Finisher

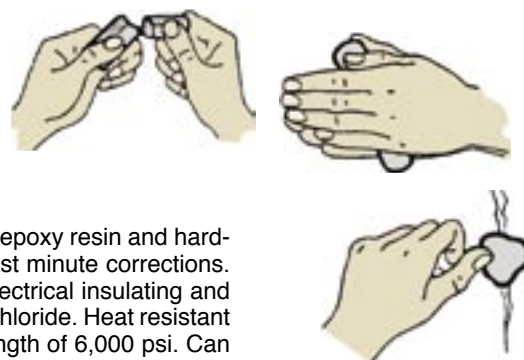


Scoops away excess caulk for a professionally finished joint. Works with all types of caulks and silicone sealers. Can be trimmed to desired bead for a variety of jobs. POP displays available.

**112402**



# ProPoxy 20 Epoxy Putty



Makes steel-hard repairs in 20 minutes. Tube holds two strips: steel-reinforced epoxy resin and hardener. Mix two strips together and it starts to cure in 10 minutes, allowing for last minute corrections. Use on metals, masonry, wood, glass, ceramics and most plastics, even on electrical insulating and damp/wet/underwater repairs. Not recommended for polyethylene or polyvinyl chloride. Heat resistant up to 300° F. After curing, compression strength of 18,000 psi and tensile strength of 6,000 psi. Can be drilled, sanded, filed and machined.

110275



## Multi-Purpose Spray Adhesive

- High strength and fast tacking
- Adjustable spray pattern
- Water resistant, permanent bonds
- High solids, low soak-in
- Non-staining
- Excellent choice for tub wall surrounds

110280 Adhesive, 13 oz.



## High Strength/High Temp Spray Adhesive

- High strength, water-resistant, permanent bond
- High temperature resistance
- Adjustable spray pattern width
- High solids, low soak-in
- Non-staining
- Bonds plastic laminates and veneers including radius edgebanding

110282 13 oz.

## Sta'-Put Spray Adhesive

Works well on bottom board, vinyl tops, metal or vinyl trim, styrofoam, foam rubber, glass, plastics and much more. Gives high solids, water-resistant bonds offering quick tack, non-wrinkling and flexibility.

110250 16 oz.; 12/Ctn.

110253 40# Cannister



## Sta'-Put II Spray Adhesive

Spray directly onto polystyrene safely with no melt-down. Ready to bond in four minutes. Water resistant. Especially formulated for styrofoams.

110252 13 oz.; 12/Ctn.

## Sta'-Put High Temp Adhesive

For use where high temperatures are an issue. Flame resistant to approx. 225° F. Non-flammable after tacked. Welds onto surface after about one minute. Not as tacky to the touch, but offers a much stronger bond once cured.

110256 12/Ctn.

## Sta'-Put II Remover

Simplifies clean-up of overspray and removes bonded materials. Virtually no residue. Compatible with most surfaces. Not recommended for paper-printed wallpaper without vinyl coating.

110254 12 oz.; 12/Ctn.

## Easy-Touch Acoustic Texture



Patch "popcorn" or "cottage cheese" type ceiling textures fast. Contains actual polystyrene chips to match commercially applied ceiling textures. Patch small areas up to 2 sq. ft. 16 oz.

- 185027** Medium
- 185028** Coarse

## Acoustic Texture Kit

Kit includes sprayer and acoustic polystyrene chip texture.



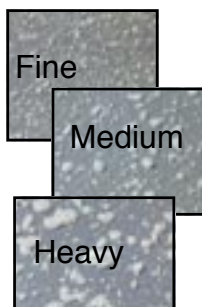
- 185030** Kit
- 185032** Twin Pack Refill

## Easy-Touch Spray Texture



Fast-drying, oil-based. Three color-coded straws let you choose the perfect match for "orange peel" splatter textures. Up to 100 sq. ft. coverage.

**185026** 20 oz.



## Easy-Touch Knockdown Texture



Water-based. Matches knockdown "Mediterranean" and splatter-type wall and ceiling textures. Two different application straws allow you to choose between medium or heavy patterns. Patches small areas up to 8 sq. ft. Single can provides up to 16 sq. ft. coverage.

**185025** 20 oz.

## Putty Knife



High impact plastic. 3.5" long handles and 3.5" long blades. Hang hole.

- 381105** 2"
- 381106** 3"
- 381107** 4"

## DAP Wallboard Joint Compound



Smooth, high quality finishing of gypsum panel joints. 3 lb. tub

**119006**

## DAP Vinyl Interior Spackling

For plaster, drywall and wood surfaces. 5.5 fl. oz. tube, white.

**119005**



## Homax Wall & Ceiling Repair Patch



For drywall, plaster and other flat surfaces. Metal patch with self-adhesive mesh backing permanently repairs holes in walls and ceilings. Refinish to create an invisible patch. Ideal for quick repair of interior drywall and plaster surfaces.

**260417** 6" Patch

## Pivoting Utility Blower with Grounded Outlets

**AirKing**  
Ventilation Products™

**NEW!**

- High Velocity Motor for Maximum Air Stream
- Three Powerful Speeds
- Two 120 Volt Grounded Outlets
- Rugged, Easy-to-Carry Handle
- Ten-Foot Cord with Grounded Plug
- Fully Assembled for Immediate Use

11.5" L x 9.25" W x 11.25" H  
10.9 Lbs Shipping Weight

**420600**



## Ceiling Stain Repairs:

**1** Before you tackle that stain, identify and repair the cause. Stains caused by roof leaks or buildup of condensation will keep coming back until the problem is fixed.

**2** Lighter stains can sometimes be removed with undiluted bleach, but be sure to protect carpet, drapes, furniture and yourself before trying this remedy. Wear rubber gloves and protective eye goggles (especially important because you are looking up at the problem area). Use a rag or a sponge and dab the area with bleach until the stain is gone.

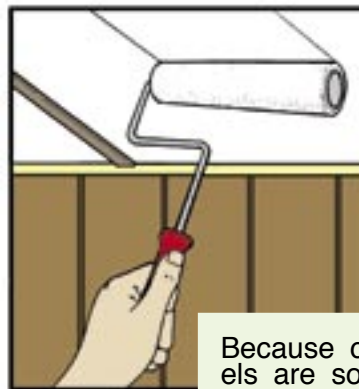
**3** Very small, light stains can often be covered up with white shoe polish or chalk. For small nicks and dents in a textured ceiling, apply white tub caulk and contour to match the texture. Larger textured areas, however, will require one of the **Easy Touch Spray Textures** featured on pages D-8.

**4** Severely discolored areas and grease stains require sealing and painting. Ceilings damaged by fire also must be sealed. **Kilz Upshot**, on the following page, is well-suited for small areas. For larger areas and to keep color uniform, consider sealing the entire ceiling with **Kilz Stain Killer** or **Wear Rite's Stain Stop** (next page) before repainting or texturing.

Portions of this Handy Hint are reproduced with permission from the Mobile Home Fix-It Guide, © 1993 by Foremost Real Estate Co., Grand Rapids, MI.



Apply masking tape to all battens and trim you don't want painted, but be sure to test that the tape won't pull off the finish.



Because ceiling panels are so porous, a primer coat will make the paint go on quicker and easier.

## Kilz Primer-Sealer-Stain Killer Oil Based

White pigmented primer for wood, plaster, drywall and burned areas. Seals in water stains, pen, lipstick, crayon, grease and oil stains. Recoat in 30-45 minutes. Easy clean-up with paint thinner. Mild odor. Coverage: approx. 400 sq. ft. per gallon.



- 185006** 13 oz. Spray; 12/Ctn.
- 185007** Gallon; 4/Ctn.

## Kilz II Primer-Sealer-Stain Killer Water Based

Water Based

White pigmented, very low odor. For interior and exterior surfaces. Seals in most stains. Can be recoated quickly. Easy clean-up with warm soapy water. Coverage: approx. 400 sq. ft. per gallon.



- 185020** Gallon; 4/Ctn.
- 185021** Quart; 6/Ctn.



## Wood-Tone Putty

Latex putty in a convenient tube fills nail holes and defects. Dries hard, cleans up with water. 1.05 fl. oz.

- 181520** White
- 181521** Walnut
- 181522** Cherry
- 181523** American Oak
- 181524** Golden Oak

## Kilz Upshot



Dependable Kilz stain-killer in a can, perfect for hard-to-reach places. Can even be used upright for ceilings. 10 oz. aerosol.

- 185004**

## Appliance Touch-Up Paint

Fast, easy, economical way to repair chipped, nicked or scratch appliances. Handy brush in cap. Each bottle bubble-carded.



- 185011** White; 12/Ctn.



## Zoom Oiler

All-purpose oil with extra long telescoping nozzle for hard-to-reach places. Nozzle can be retracted when not in use. 4 oz.

- 180101** 12/Ctn.



## WD-40 Lubricant

General purpose lubricant stops squeaks, loosens rust and protects metals. Spray can with extension nozzle for hard-to-reach places. 8 oz.

- 180104** 12/Ctn.

## Trailer Glitter

CAMCO

By Camco. Removes black streaks, renews sheen to metal, fiberglass, plastic, wood, painted or acrylic surfaces and other hard surfaces. Non-flammable, non-abrasive.

**180801** 32 oz.; 14/Ctn.

**180802** Gallon; 6/Ctn.



CAMCO

## Black Streak Remover

Use as 100% spray to quickly and easily remove even stubborn streaks caused by window and door sealants. Will not harm painted finishes. Also removes tree sap and bugs. By Camco.

**180804** 32 oz.; 4/Ctn.

## Vent Mate Register Air Filters



Traps and controls:

- Pollen
- Dust and dust mites
- Tobacco odors
- Mold, mildew and fungi spores

Fits most registers. Non-toxic. Excellent for allergy sufferers and asthmatics. Easy to install in just seconds. Fragrance lasts approximately three months. Packaged for pegboard display. Saran-coating locks in fragrance.

**180205** Potpourri; 3/Pk.

**180206** Pine; 3/Pk.

## Plumber's Hand Cleaner



Safely removes ABS, PVC and CPVC cements, varnishes, enamels, grease, paints and other adhesives. Freshly scented pumice formula contains lanolin, aloe, jojoba and vitamin E. Non-toxic, non-flammable, biodegradable. 16 oz.

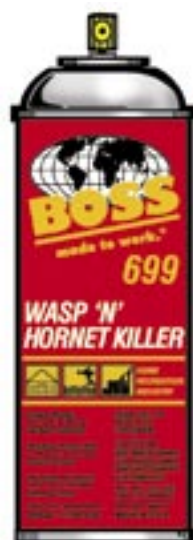
**181307** 12/Ctn.

## Coil & Fin Cleaner/Degreaser



**181375**

## Boss 699 Wasp and Hornet Killer



Quickly and effectively kills wasps, hornets and bees. Safe for use around electrical equipment. Jets up to 12 ft. stream. 14 oz. can.

**181818**

## Spot Remover & Carpet Cleaner



Non-flammable. For removal of grease, tar, oil and other tough stains on carpet. Apply to pile with cloth (do not spray directly on the carpet). 20 oz. spray.

**181350** 12/Ctn.

Prices and Specifications Subject to Change without Notice